

# Installation and Operation Manual

## (OFULO 5)

- 1、 Install the apron plate to the bathtub, as shown in figure 1.



Figure 1

- 2、 Fix two nuts in the  $\pi$ -shape long bolt which has the iron sheets, as shown in figure 2.



Figure 2

- 3、 Insert the bolt above-mentioned into the two metal fixing holes, then install the nuts respectively, as shown in figure 3 and figure 4.



Metal fixing hole

Figure 3



Figure 4

- 4、 Fasten the apron plate. Use four fixing lock-plates and eight long bolts (as shown in figure 5) and follow figure 6 and figure 7 to fasten, then adjust the apron plate in order to keep it vertical ( $90^\circ$ ) with the upper plane of the bathtub.



Figure 5



Figure 6



Figure 7

5、 Employ six short bolts to fix the  $\pi$ -shape iron sheet on the bottom of the bathtub, as shown in figure 8.

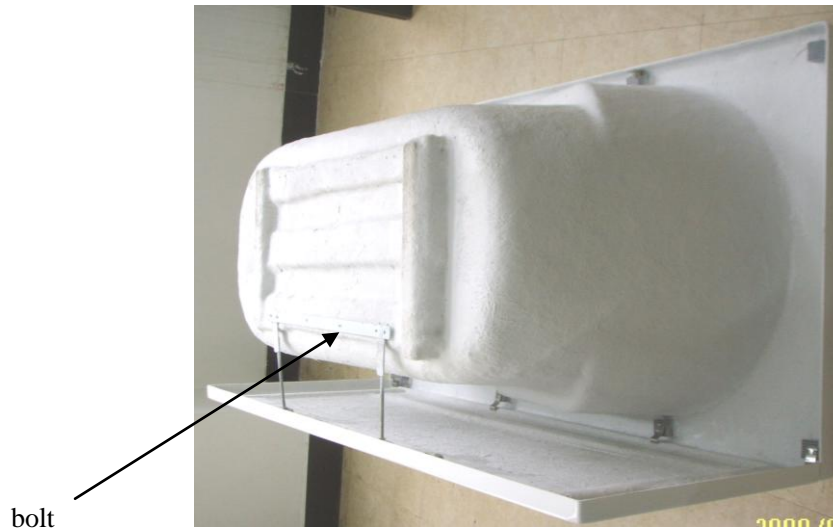


Figure 8

6、 Employ the tool when Installation as shown in figure 9.



figure 9

**Note:** Watch out of collisions and prevent hard objects from scratching surface during installation. In the case where the surface is scratched accidentally, please gently polish the surface with 1500# waterproof abrasive paper, then dip a cloth with some toothpaste and use it to wipe lightly. In this way the bathtub will refresh immediately.